

Available for Work:
(702) 628-9396

LOCAL UNION 831

TRADESHOW AND SIGN CRAFTS
I.U.P.A.T. - A.F.L.- C.I.O.

Local Union 831
1701 Whitney Mesa, Ste. 10
Henderson, NV 89014
www.local831.org

MAY 2017						
S	M	T	W	T	F	S
	1	2	3	4	5	6
7	8	9	10	11	12	13
14	15	16	17	18	19	20
21	22	23	24	25	26	27
28	29	30	31			

LAS VEGAS MAY 2017 SHOW SCHEDULE

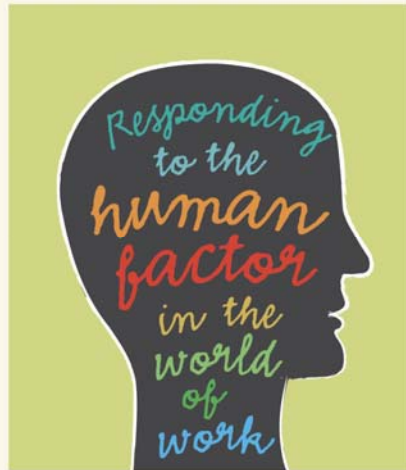
***IMPORTANT!!!!!!!
MAKE SURE YOUR BENEFICIARY
INFORMATION IS CURRENT.***

JUNE 2017						
S	M	T	W	T	F	S
				1	2	3
4	5	6	7	8	9	10
11	12	13	14	15	16	17
18	19	20	21	22	23	23
25	26	27	28	29	30	

For Assistance in applying for Unemployment Benefits:
http://www.workforcedevelopmentmonth.com/workforce_experts_lacounty.asp

MOVE IN	START	END	SHOW NAME	LOCATION	HALL/BOOTH	COMPANY
5/4	05/09	05/11	NATIONAL HARDWARE SHOW 2017	LVCC	NORTH/CENTRAL	FDC
5/17	05/22	05/24	ICSC RECON 2017	LVCC	FULL	GES
5/19	05/23	05/25	LICENSING INTERNATIONAL EXPO	MANDALAY BAY	BAYSIDE B-E	GES
5/26	06/05	06/07	JCK 2017	MANDALAY BAY	BAYSIDE/SHORELINE	FDC
5/31	06/05	06/08	CLEAN SHOW 2017	LVCC	CENTRAL	GES

Show dates indicated are as furnished and are subject to change.



DEPRESSION, STRESS & ANXIETY MARRIAGE & RELATIONSHIPS ALCOHOL & DRUG ABUSE FAMILY & PARENTING

CLAREMONT EAP

VISIT www.ClaremontEAP.com
CLICK Claremont Personal Advantage
REGISTER As a New Member

Free and Confidential Help with Life's Concerns

1-800-834-3773

CLAREMONT PERSONAL ADVANTAGE www.claremonteap.com 24 hours a day, 7 days a week

OTHER PERSONAL CONCERNS JOB RELATED CONCERNS FINANCIAL MATTERS LEGAL ISSUES

©LOCAL UNION 831 ALL RIGHTS RESERVED 2015 SB/sb

- Available for Work? Call the Union Office Between 8:00 a.m. -- 12:00 noon: LOS ANGELES (626) 296-8086

- Questions regarding health insurance eligibility, dental or vision coverage, retirement and/or pension information should be directed to the:

LOCAL 831 HEALTH & PENSION TRUST FUND at (877) 572-7005

CHECK OUT THE LOCAL 831 WEBSITE: <http://www.local831.org>